



OMEGA

Content Management Services

The Content Management System of the future!



facebook.com/omegacms



linkedin.com/company/omega-cms



info@omegacms.io



omegacms.io



What is a CMS?

A Content Management System (CMS) is a software platform that allows an organization to store and manipulate a wide variety of data including textual content, images and multimedia video.

CONVERGENCE



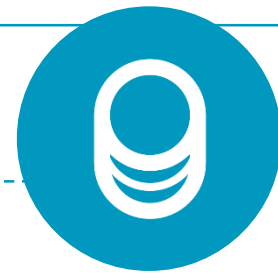
► Zuckerberg's Law

THE AMOUNT A USER SHARES TODAY IS TWICE THE AMOUNT THEY SHARED A YEAR AGO.

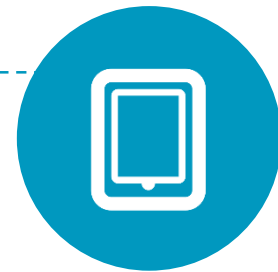
► Massive Content Explosion

There is a massive explosion in content happening today

THE
PROBLEM



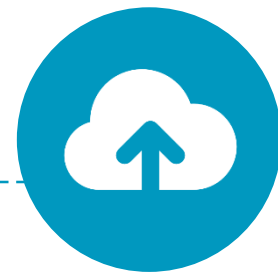
DATABASE DEPENDENCY



OPERATING SYSTEM
DEPENDENCY



EXTERNAL DATA
INTEGRATION



DEVICE INTEROPERABILITY



BUSINESS MODEL
IMPLEMENTATION

DATABASE INDEPENDENT

Multi-Database Support

Want to store your CMS content on high performance **Oracle** but need your custom data to work on **CouchBase**, no problem!



Software Agnostic

Finally a CMS that is agnostic to the type of database it works with; you already have MySQL, **keep it**; you want to implement Oracle, **do it**



Data Structure Agnostic

No matter how the data is organized within the database, Omega CMS will be able to read it, weather you work with **relational** or **no-sql** databases.

OS AGNOSTIC

SECURITY

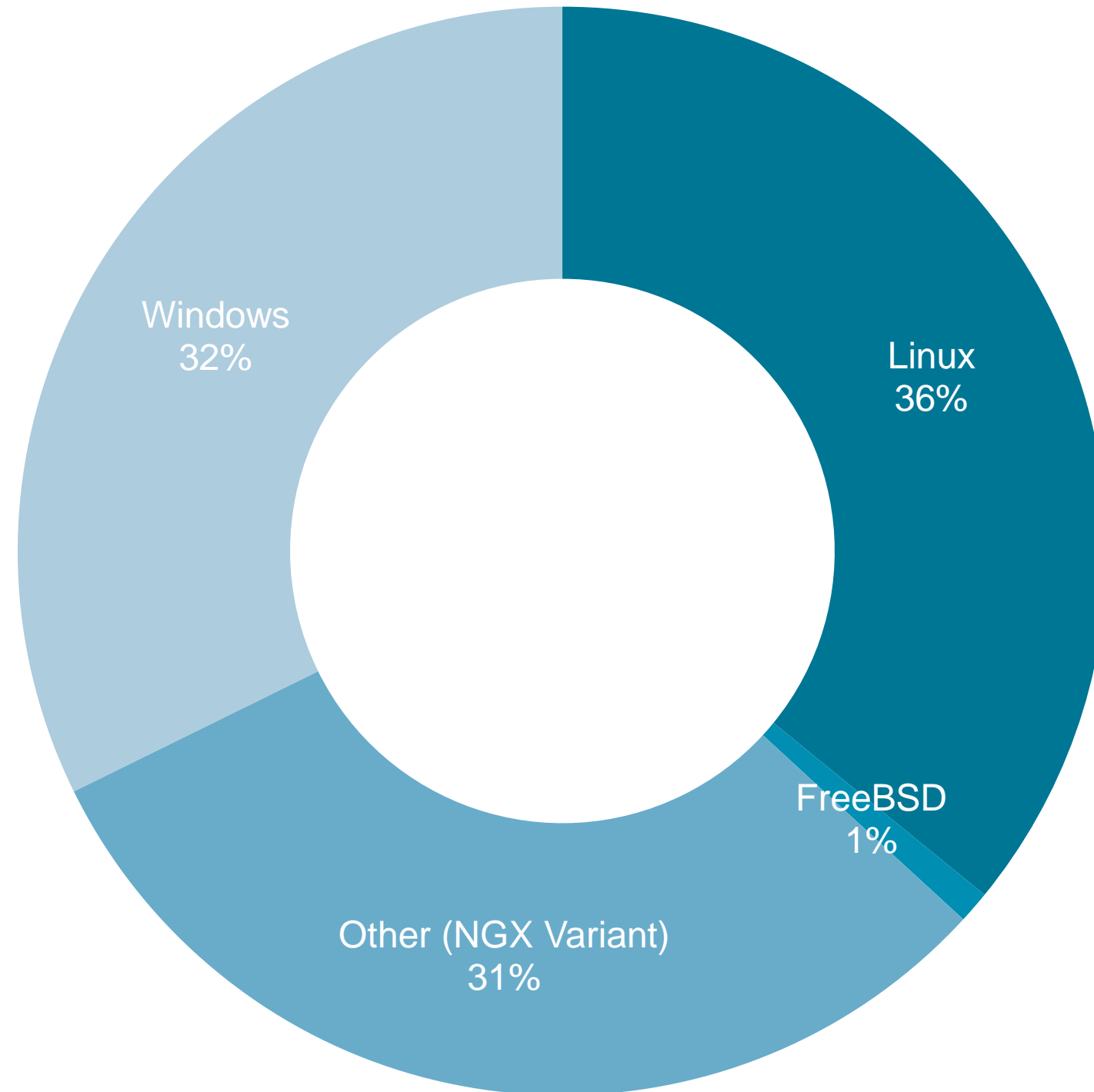
With the recent threat of malware and ransomware, lock down your systems with much less affected Linux platforms

PERFORMANCE

Kestrel is built for speed, test show that .net Core is many times faster than IIS

INTEROPERABILITY

Kestrel is designed to work as a stand alone platform or in conjunction with an existing web server platform



INDEPENDENCE

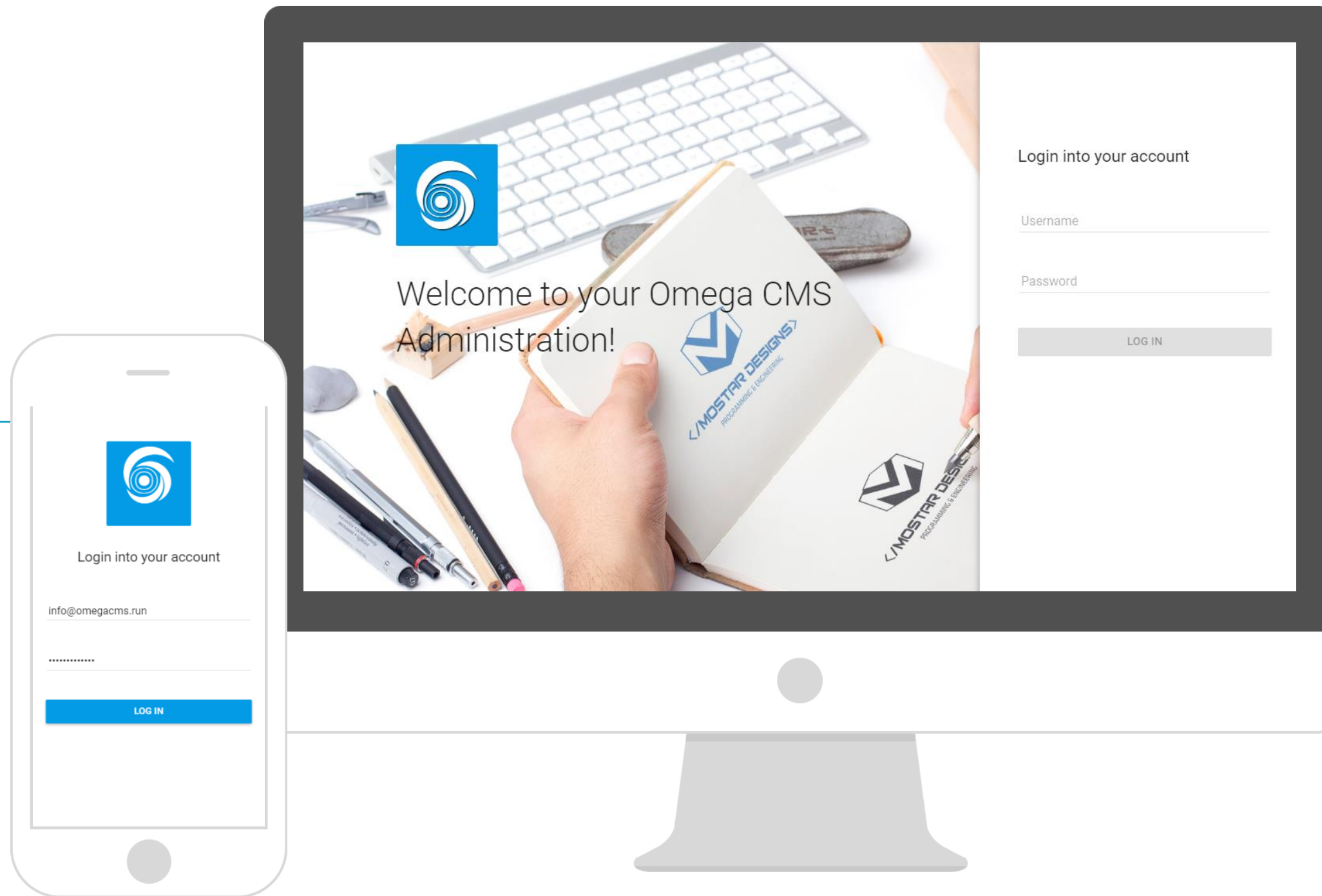
Because the Microsoft Kestrel server can run on different platforms, you have a wider range of choices how to run your own system.

No need to hire new staff to manage your new CMS, reuse existing systems, hardware and staff!

EXTERNAL DATA INTEGRATION

The OmegaCMS platform can integrate external data from almost any data source out there!





DEVICE INTEROPERABILITY

OmegaCMS is a Web Service based system. This means that all data can be accessed and manipulated either via our .net API or our JSON web services. The administration front end is built with AngularJS and TypeScript.

